

# ONGESHEFA

Free

Edition: 02  
July 2017

Product of Namtranslations Services CC: No: 2005/1349  
MICT Certificate No: 15/12/305



## Tinya-Ink Solutions cc

Reg No. cc/2011/4145

The source of ink

Email: [tinyainksolutions@gmail.com](mailto:tinyainksolutions@gmail.com)

### We offer:

Sales of consumables in general (toner & ink Cartridges, photocopy papers  
We do copies, printing, fax, internet services, binding, lamination, scanning etc.



### Okahao Branch

Find us at SH Motor Complex, Main Road  
between Chicco Complex & Ehafo Store.  
Tel: +264 65 252348  
Fax: +264 65 252349  
Cell: +264 8 1 338 9680



### Outapi Branch

Find us in Shaanika Nashilongo  
Street, Iiyambo Iiyambo Complex  
Shop No: 1  
Tel: +264 65 251263  
Fax: +264 65 251303

Main Pages  
In this  
edition:

Tinya-Ink Solutions cc - Front Cover  
Outapi Shopping Centre - p2-3  
Komanda Lounge p4  
Namib Empire p5  
Rani Group Peoples Market p6  
Pick n Pay p7

Kapewasha General Trading p8  
Direct Construction & Design Lab. p9  
Ombala Complex Trading p10  
TMME Trading Enterprises p11  
TuliLine - Back Cover

# OUTAPI

*The Largest Shopping Centre in Omusati Region*

*Developed by TONA Trading Holdings (Pty) Ltd*

*The Centre is managed by Remax Namibia (Cell No. +264 811 583463)*

**The Shopping Centre houses about 50 shops including well-known brands**



# SHOPPING CENTRE

such as Pick n Pay, Pep Home, Ok Furniture, MotorVac, Waltons etc



# KOMANDA LOUNGE

Restaurant, Bar & BB

+264 8 11 47 47 47

Outapi



CASINO



Affordable accommodation in  
town from N\$250 per night



Contact us +264 8 11 47 47 47, opposite CashBuild, Outapi

# NAMIB EMPIRE Tsandi



Contact No: +264 811 240002



*ATMs Available*



**TSANDI GUESTHOUSE**

**FLATS FOR RENT/PRIVATE ACCOMMODATION**



**TSANDI HARDWARE**

**OSHINI**

**PUMA SERVICE STATION - TSANDI**

# RANI GROUP

PEOPLES MARKET



## Ploughing back to the community

Mr. Ali Dharani, the Group's Director  
seen handing over donations to various recipients

Donation of N\$10,000 to  
Nakaale Comb. School,  
Ohangwena Region (2017)



Pendukeni Iivula Ithana  
High School  
N\$100, 000 (2016)



Etunda Farm Primary School  
N\$100, 000 (2017)



Acquired prosthetic leg for  
Mr. Jekonia Shipila worth N\$50,500  
(2017)

Co-sponsor  
of the Northern  
SME Awards  
(2017)



RANI Group of companies has business interests in Oshakati, Ongwediva, Ondangwa, Rundu, Outapi and Opuwo.

Landline: +264 65 222296 Fax no: +264 65 222539

Email: [ali@raniandgroup.com](mailto:ali@raniandgroup.com)

Whatsapp No: +264 81 650 5050

# SOCIAL WELFARE

**P**ick n Pay Namibia – contributing to the social welfare of our communities and the growth of our country

From Katima Mulilo to Katutura, Outapi to Ondangwa, at Pick n Pay Namibia we continue to expand the positive impacts we have on our customers' shopping experiences and on our nation.

A subsidiary of the Ohlthaver & List (O&L) Group, Pick n Pay Namibia is integral to the group's vision metric of creating an additional 4,000 jobs by 2019 – Pick n Pay Namibia currently employs close to 2,400 Namibians at 23 stores across the country.

Focusing on the critical role we play in supporting government's 'Growth-at-Home' strategy, Pick n Pay strongly supports the collective vision of eradicating poverty as outlined in the principles and goals of the Harambee Prosperity Plan.

As part of our corporate social responsibility and in line with O&L Group's purpose of 'Creating a future, enhancing life' for all Namibians, each and every Pick n Pay branch in the

country is committed to supporting a local community organisation.

Managing Director, Norbert Wurm, stresses, "We are very grateful for the support received over the years by our customers, and the Namibian community at large. The least we can do to show our gratitude, is to give back where and when we can, to the community in contribution to bettering their livelihoods."

In 2016, we committed to another five vital community-based organisations:

- Oonte OVC Organization in Ondangwa, which provides daily meals, home-based care and educational programmes for orphans and vulnerable children
- Mainstream Foundation in Katima Mulilo, which educates and cares for 50 children with disabilities
- Dorkas Community Development Organization in Windhoek, which assists children and the bedridden elderly with meals
- Anamulenge Primary School in Outapi provides meals, which is fundamental to a child's ability to learn

- Namibia Children's Home in Windhoek, which cares for and provides therapy to more than 100 orphans and vulnerable children.

In support of our nation's endeavour to increase local procurement and employment, Pick n Pay Namibia and its agro-production partner, Natural Value Foods, have been producing vegetables locally at Otavifontein for retail at its stores throughout Namibia.

Pick n Pay is not just a retailer; it is part of a growing community, as evidenced by its impact on social organisations, employment and food security.

Pick n Pay continues to reaffirm its commitment to the nation, making a difference by truly living and passionately driving their purpose – Creating a future, Enhancing life for all Namibians.

PROUD TO BE PART OF



# KAPEWASHA GENERAL TRADING CC

Find us at Outapi - Tsandi and Ruacana

Cell: 0811270002 or 0812555763



We supply fresh red and white meat as well as Biltongs and Chilli Bites.



Come and buy a variety of livestock food and live animals at affordable prices.



Hire a concrete mixer, compact plate, brick making machine, ladders & electricity generator





# DCDL

# DIRECT CONSTRUCTION & DESIGN LAB CC

ARCHITECTURAL INNOVATION

Our company possesses ranging successfully carried out Residential, Industrial, Commercial, Institutional, as well as Leisure and Recreational projects throughout Namibia.

We are vastly experienced in:

- Architectural Design,
- Technical Documentation,
- Project Supervision and Inspections,
- Quality and Cost Control,
- Defect Management,
- Municipal Submissions and Approvals,
- As-Built Drawing Production,
- Project Feasibility Studies &
- Coordination of Services.



Outapi

# OMBALA COMPLEX TRADING CC



*Designer: Men & Women wrist watches*

Call: +264 81 788 3687



*Unique Collections  
Sun glasses*



Visit us today: Tel: +264 65 251680 ombala@iway.na  
Website: www.ombala.iway.na



OKAHANDJA

**TMME**

# TRADING ENTERPRISES

Bar - Restaurant - Gambling - Construction - Renovations, Farming & Cash Loans



**EPANDULO  
MEAT MARKET  
FRESH FISH**



T.M.M.E TRADING cc  
Telefax: +26462504254  
Cell: 0811247045 or 0812201282



Find us: Erf 1550 - Nau- Aib, Okahandja, Cell - 264 811247045  
Tel: +264 62 504254 Email; [ishitilekamai@gmail.com](mailto:ishitilekamai@gmail.com)

# STYLISH FLOWERS-DECOR

come through for the best goods & services



**SALES & RENTING ON**  
**Fresh Flowers & Polystere Flowers**  
**Brides & Grooms Chairs, Cake Tables**  
**Chair and Table Covers plus Grass Mat**

**Find us: Outapi, next to Oluzizi**  
**Service Station, Shop No. 1B**  
**Contact No: +264 81 3396002 or**  
**+264 81 2585206**  
**Email: stylishdeco96@gmail.com**

## OMANKETE LODGE

**Find us at Outapi: Our facilities: Camping, Swimming Pool, Bar and Braai Parks.**  
**Call +264 81 2404447 for bookings. Fish shops also at Outapi and Oshifo, Ruacana.**



## Multistage Cooling Enterprises

Specialises in

1. Manufacturing of Mobile Coolers
2. Supply and install Cold and Freezer Rooms
3. Supply and Install Aircondition
4. Repair Domestic Freezers

We also repair, service, install, maintain and manufacture Mobile Coolers. Mobile Coolers are also available for rent & Sale



# FARM HORIZON

Striving to contribute to food security  
in the Republic of Namibia

Find us 15 Km from Outapi Town,  
Call +264 81 2222243 for eggs, chicken,  
quail birds and much more



Find us at Ombala Complex, Outapi  
Behind Engen Service Station



Bernadette P. Erago (Head Trainer)  
Fostering a culture of entrepreneurship

Contact us for business training

Tel: +264 (85) 303 3006

+264 (85) 657 4682

eragobpnbgh@hotmail.com

## DANNY INVESTMENT

Find us at Outapi Shopping Centre  
Cell: +264 81 272 9350 | Tel: 065 258 084



CCTV Installation | DStv Installation  
Hidden Camera, HD Bullet Camera  
HD 1080p 4-8 Camera System

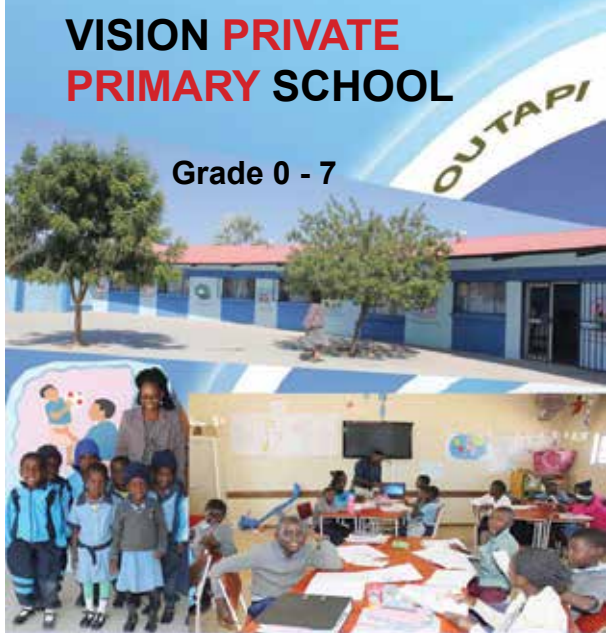
**OKAPIKA CAMPSITE**  
200m from Oshifo T-Junction,  
Ruacana

Tel: +264 65 272028  
Fax: +264 65 272028  
Cell: +264 81 2051784 or +264 81 3100001  
Email: rosegeulen@gmail.com OR  
rose\_john786@yahoo.com  
Website: www.okapika-camp.com



**VISION PRIVATE  
PRIMARY SCHOOL**

Grade 0 - 7



**Important Information**

Enrolment for 2018 Academic year: July to September 2017  
For all informationa about our school, please contact the  
Principal: Vision Private Primary School, P.O Box 1265, Outapi  
Tel: +264 65 251 480 Fax No: +264 65 251 481  
Email: privateprimaryvision@yahoo.com

**TIANSHI HEALTHY  
PRODUCTS**

**Outapi Shop - Depot**

Find us in Eluwa Building, Outapi  
Cell Numbers: 0812187027 or 0816252569



**Namtranslations Services cc**

[www.namtranslations.iway.na](http://www.namtranslations.iway.na)

Services we offer:

Translation of all major Namibian languages

- document layouts & Graphic design
- audio, video recordings & photography for all events
- Namambe interviews (check our website for more info.)

# KINETIC WIZARD



## Products and Services:

Microsoft Business Solutions (Microsoft Dynamics GP)  
Microsoft Business Solutions–Great Plains offers integrated capabilities for financial management, distribution, manufacturing, project accounting, human resource management, business analytics, and customer relationship management. By delivering deep access to decision-driving information, a rapid return on investment, and expert, dedicated customer service, Microsoft Great Plains helps you grow and manage your business better.

## Billing System

Simple and Customizable billing system developed specifically for Regional Council, Town Council and Village Council. Ability to import water reading, fast billing processing 2000 customer bills in 5 min, Customer notification via SMS, Email.

## HR and Payroll

Manage organization employees easily, ability to track /manage staffs leave days. ensuring that your payroll processing is accurate. Printable pay slips + employees Tax reports.

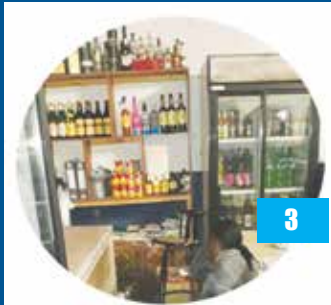
15

## Contact: Makarius Shalumbu (Consultant)

Microsoft Dynamics GP  
Mobile: (+264) 81 128 5563 Office: (+264) 81 411 1102  
[makarius.shalumbu@kineticwizard.com.na](mailto:makarius.shalumbu@kineticwizard.com.na)  
Working Hours: Mon-Fri 8:30-17:00 UCT+01:00 (Windhoek)

## Chicken Bar

Enjoy Namibian African tales in the heart of Onhimbu



3

Chairs & Tables  
for rent

+264 81 3631059

## ONELUGO INVESTMENT

4 all your welding needs



Now in Windhoek & Ondangwa

Call 0812960197

Email: [ishitilep90@gmail.com](mailto:ishitilep90@gmail.com)

# Black Soap



**Tuli**line®

AVAILABLE AT JNP, WINDHOEK

Shops & individuals who intend selling the products can contact us @ +264 8 1 244 1477



African black soap is an all-natural soap with a blend of plantain skin, cocoa pod ash, palm leaves, shea butter, virgin palm oil, coconut oil; hand-crafted by village women in Africa who make the soap for themselves and to support their families.

- Protects the skin from free radical damage.
  - Firms and tones skin and improves skin texture.
  - Fades Skin Discolorations.
  - Reduces Inflammation and Skin Irritations.
  - Helps to heal skin problem.
  - Has antibacterial and anti-fungal properties and is great for deep pore cleansing.
- It is also effective at removing makeup.
- Alleviates Razor Bumps. It is often used by men during shaving because of the high shea butter content, which protects the skin.

**Packed and distributed in Namibia by: Tuli-Line Trading services cc**  
**Reg: cc/2008/3466 P.O.Box 2921, Windhoek, Namibia**  
**E-mail: tulilinenamibia@gmail.com**